

SILICONE COSMETIC MAXILLO FACIAL

Nose | Ear | Eye

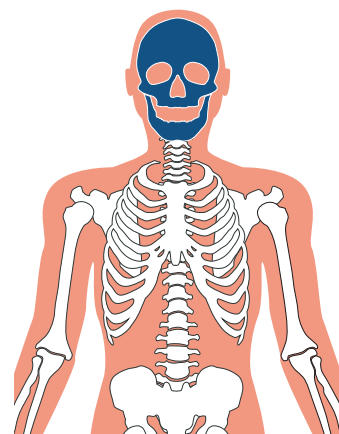
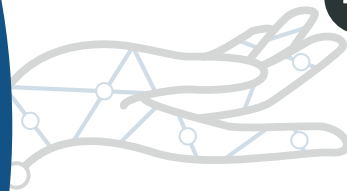
Procosil is specialized in the realization of **epithesis** for nose, ear and eye.

These last two are reproduced by imprints and replace **exactly the missing part** by basing ourselves on the contralateral healthy side. Regarding the nose epithesis, **we work by looking at photographs** or the anatomy of the patients face.

The **coloring** is very important and requires also an artistic sense. The fixing of the epithesis will depend basically on the part to recreate and **can be fixed both** by anchorage or, special glue, or by eyeglasses.

Our silicone is a biomedical silicone and **does not give allergies**.

UPPER LIMBS



PROCOSIL[®]
hightech prosthesis





Maxillo Facial

