

# 3D Shape System

## Arm | Forearm

Our prosthesis of arm and forearm are realized with **the same precision of details**; the prosthetic hand is the **exact reproduction** of the contralateral healthy hand. All the components of the prosthesis (hand, forearm and/or arm) are filled with our 3D Shape System in order to make as light as possible and comfortable the entire prosthesis when brought throughout the day.

3D Shape System is an **innovative prosthesis** for forearm and arm amputations. **Very light** highly resistant and durable modular prosthesis with variable weight system. The prosthesis is composed of an inner soft shell and yet **highly resistant** shell designed to receive a number of steel balls just enough to create a counterweight for an **optimized balance** according to the patient needs.

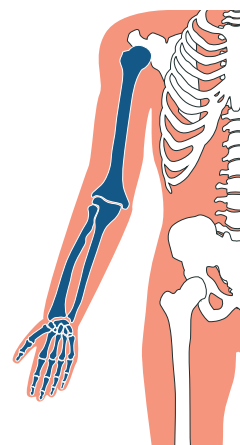
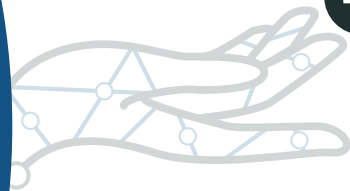
This design allows the continuous and **dynamic adaptation** of the prosthesis center of gravity in accordance to the arm/hand movement.

3D Shape System is compatible and adapts to every system of functional or free elbow and can adapt also to **every kind of sock**.

The **advantages** are:

- > Very soft
- > Absorb shock
- > High resistance
- > Strong
- > Very durable
- > Lightweight
- > Retains its shape
- > Resistant to stretching
- > Modularibility
- > Waterproof
- > Easily washed
- > Mildew resistant

UPPER LIMBS



**PROCOSIL**<sup>®</sup>  
hightech prosthesis





# 3D Shape System